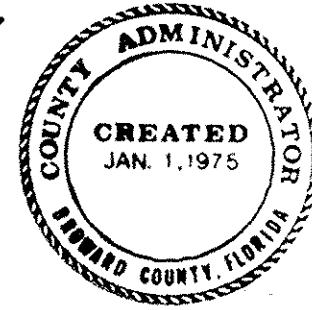


I HEREBY CERTIFY that this is a true  
and correct copy of a map or plat as the same  
appears of record in Plat Book 2 at Page 43  
of the public record of Broward County, Florida.  
WITNESS my hand and official seal in the City of  
Fort Lauderdale, FL this 24 day of July, A.D.  
1923



2-43

43

KNOW ALL MEN BY THESE PRESENTS:-

That Blount Bros. Realty Co., a corporation under the laws of the State of Florida, owner of the lands shown and described in the attached plat, has caused said lands to be subdivided in the manner shown in the accompanying plat, and the streets, avenues and boulevards as shown on said plat are hereby dedicated to the perpetual use of the public as thoroughfares, reserving to the said Blount Bros. Realty Co., its successors, legal representatives or assigns, the reversion or reversions thereof whenever discontinued by law.

In testimony Whereof The said Blount Bros. Realty Co., has caused these presents to be signed by its President and attested by its Secretary and the corporate seal of said Company to be hereto affixed this 5th day of February A.D. 1923.

Attest J. D. Blount  
Secretary

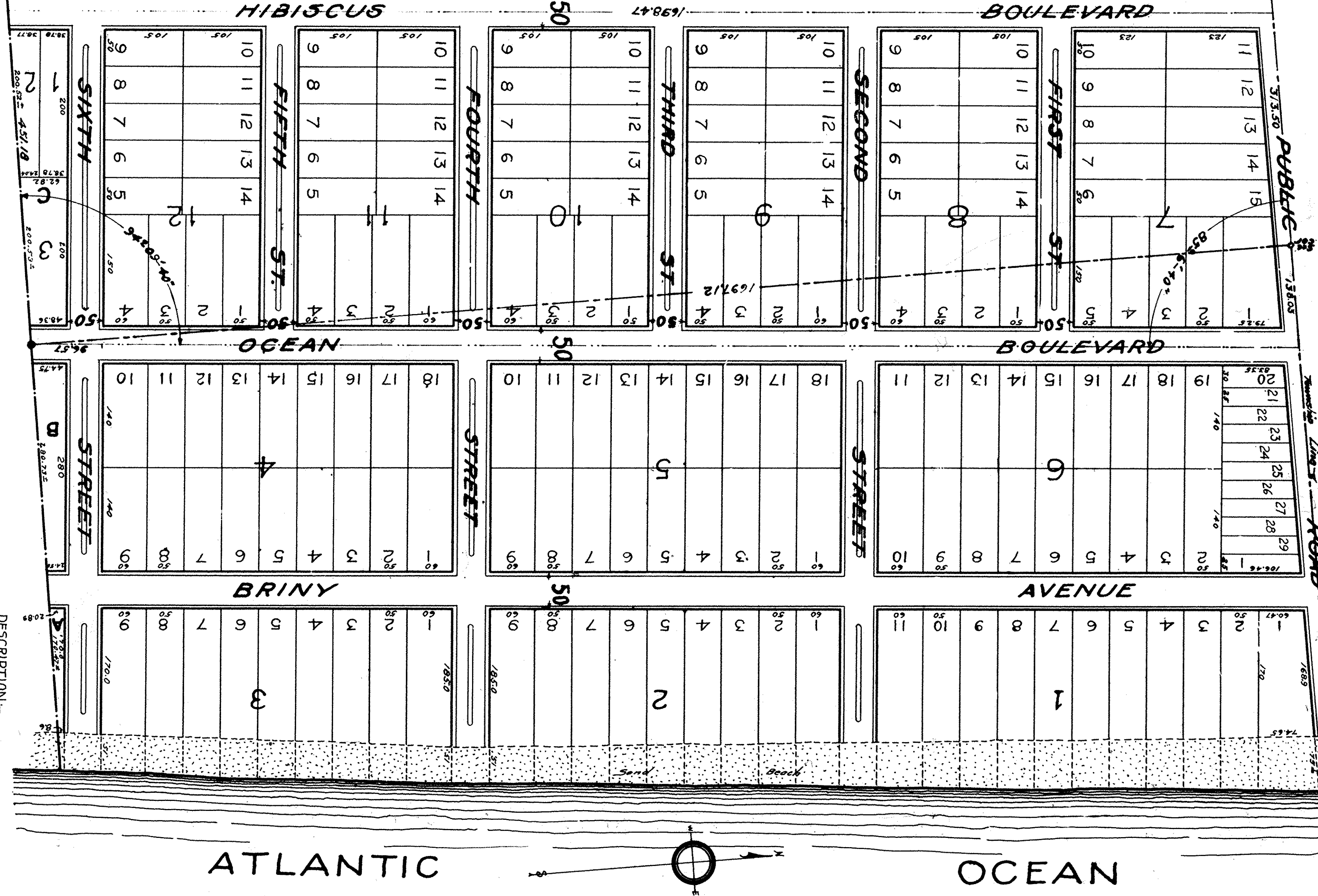
Geo. C. Blount  
President

STATE OF FLORIDA  
COUNTY OF BROWARD  
This day personally appeared before me a Notary Public, Geo. L. Blount and J. D. Blount, both to me well known, and acknowledged themselves to be President and Secretary respectively of Blount Bros. Realty Co., and that they executed the foregoing instrument of dedication by authority of the Board of Directors of said corporation for the intentions and purposes therein set forth.

WITNESS my hand and Seal hereto affixed this 5th day of February A.D. 1923.

Jasper Lawson  
Notary Public

My commission expires April 27, 1924.  
EXP. 4-27-24



POMPANO BEACH  
BLOUNT BROS. REALTY CO.'S  
SUBDIVISION

-POMPANO BEACH-  
BROWARD COUNTY,  
FLORIDA

STATE OF FLORIDA  
COUNTY OF BROWARD } J. H. C. Davis,  
Civil Engineer, do hereby certify that I have  
subdivided the above described land into lots,  
blocks, streets and avenues in the manner  
shown on the attached plat, that the measurements and distances shown on said  
plat in feet and decimals thereof, were  
made on the ground and are true and  
correct to my best knowledge and belief.

IN WITNESS WHEREOF I have hereunto  
set my hand and seal this 3rd day of  
February A.D. 1923.

Florida State Registry, Jfe 48

2-43  
1923  
2-12-23

H. C. DAVIS - CIVIL ENGINEER  
Fort Lauderdale, Florida.  
Seal No. 1 = 1001  
February 1923

DESCRIPTION:-  
Beginning at the Northeast corner of Gov't Lot 1  
in Sec. 6 T. 49 S., R. 43 E., and running thence  
West along the township line, 313.50 ft. thence  
Southerly, 1638.41 ft. to a point 451.18 ft. West  
from the Southeast corner of Lot 4 of L.W.  
Marshall's Subdivision of Gov't Lots and 2  
in said Sec. 6; thence 451.18 ft. along the South  
boundary of said Lot 4 to the Southeast corner  
thereof; thence North along the section line  
1637.12 ft. to point of beginning;  
Also all of Gov't Lot 1 in Sec. 5 in Township  
and range aforesaid.